

terrain

vol. viii

noun ter·rain \tə-ˈrān also te-\

a (1) : a geographic area (2) : a piece of land (3) : ground
b : the physical features of a tract of land
c : a field of knowledge or interest

~Merriam-Webster

The annual terrain publication captures and celebrates progressive work being done by the American Society of Landscape Architects Kentucky Chapter (ASLA KY) to further landscape architecture in Kentucky; recognizes non-landscape architect leaders who make substantial contributions to our community in the spirit of the profession (through the Grady Clay Award); and highlights award winning projects throughout the state. The intention of this publication is to annually highlight and promote what is most impactful to the practice and our communities. This is a publication for landscape architecture professionals, local leaders, future landscape architects, and anyone else who experiences landscape. The quality of our future is dependent on thoughtful use of our land.

We start the conversation with terrain...



/ PLATINUM



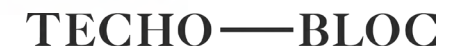
/ GOLD



/ SILVER



/ BRONZE



terrain
vol. viii

American Society
of Landscape Architects
Kentucky Chapter
P.O. Box 701334
Louisville, KY 40270
www.aslakentucky.org

/ CONTENTS

- i About terrain
- ii 2022-23 ASLA KY Sponsors
- v Table Of Contents

- 1 President’s Message

- 2 About ASLA KY
 - Public Awareness / WLAM / ASLA KY Advocacy

- 18 ASLA National Conference

- 20 UKLA Mayfield Studio

- 24 2020 ASLA KY Awards
 - Jury Introduction

- 26 Design / Non-Constructed Work
 - The Commons- Merit Award

- 30 Design / Constructed Work
 - Town Branch Commons - Honor Award
 - Frontier Nursing University - Merit Award
 - Imagination Alley - Merit Award
 - Rice Island - Merit Award

- 50 Planning and Analysis
 - Broadway All the Way - Honor Award

- 56 Residential Design
 - 900 Block - Merit Award

- 60 Student Award
 - Connecting Carrollton - Merit Award

- 64 Grady Clay Community Involvement Award

- 68 Student Academic Awards

- 70 2022-23 ASLA KY Executive Committee

ABOUT / KENTUCKY CHAPTER

Follow us!



Instagram: KENTUCKYASLA



Twitter: @KentuckyASLA



www.facebook.com/KYASLA/

www.ASLAKENTUCKY.org



ASLA

KENTUCKY

President's Message

Over the past two years our world has changed. We have been challenged by an ever-changing pandemic, catastrophic damage from two natural disasters, and demographic changes across the commonwealth. We see an environment with increased professional demands as we respond to growth within the Commonwealth and an increased investment in Kentucky infrastructure. Many of the design challenges within this new world are the same as before the pandemic: How do we design a more resilient world that responds to climate change? How do we facilitate the development of communities that support their residents and expand equity across Kentucky? What form do our projects take as they expand access to natural spaces and enrich the lives of the public? This new world challenges us to work together in new ways as we continue to serve the people of Kentucky.

The Kentucky chapter of ASLA continues to have a great impact on our communities and within the larger society of the American Society of Landscape Architects. The chapter is led by a 16 person executive committee acting as the decision making body for the organization. These individuals spend countless hours volunteering to promote the goals of our Society and create meaningful programs for our members. This diverse group of individuals represents the full breadth of practice and experience of our profession. They continue to work to promote the profession of landscape architecture through advocacy, education, communication, and fellowship.

As a Chapter Executive Committee, we have discussed what this new world means for a chapter. We believe that this year is the year that we begin to return to full activity. We believe that our professional society has a responsibility to the students at the University of Kentucky Department of Landscape Architecture, supporting their education and development as future professionals and we will continue to explore additional opportunities to work with our students and emerging professionals to cultivate a passion for landscape architecture and a culture of service. Through new initiatives and restarted programs, we believe that this year will illustrate that the Kentucky chapter has emerged from the pandemic stronger and more excited to serve. We look forward to seeing you at more in person events as we work to celebrate landscape architecture and expand our service to Kentucky.

If you are currently a member of ASLA, your support is appreciated and without you we wouldn't be able to support future generations of landscape architects. If your membership has lapsed over this stressful time, I encourage you to rejoin us in our mission. If you have never been a member, I invite you to join us as we advocate for our profession and share our passion for landscape architecture.

To get involved, please contact:
Kevin McCalla, PLA, ASLA

ABOUT / PUBLIC AWARENESS

Landscape architects typically hold a bachelor's or master's degree in landscape architecture, covering a broad spectrum of design, science, and technical know-how. Topics include site design, historic preservation, planning, grading and drainage, horticulture, and even subjects like psychology. All 50 states require landscape architects to earn a license to practice. This not only involves earning a university degree, but usually several years of work experience, passing of a rigorous exam, and taking continuing education courses.

It's easy to confuse landscape architects with other landscape professionals, but the difference is straightforward. Landscape architects design, often working with landscaping or other construction companies to install those designs. Think of the fashion designer imagining an outfit while a clothing manufacturer makes the apparel, or an artist designing a wall poster that's printed by another company. Landscape architects and contractors are complementary but highly distinct professions.

For more information, please visit www.asla.org



ASLA

Here are just a few of the project types covered by landscape architecture:

School and college campuses
Corporate and commercial grounds
Public gardens and arboreta
Historic preservation and restoration
Hotels, resorts and other facility sites
Interior landscapes
Land planning
Landscape art and earth sculpture
Monument grounds
Parks and recreation
Land reclamation and rehabilitation
Residential sites
Security design
Streetscapes and public spaces
Therapeutic gardens
Transportation corridors and facilities
Urban and suburban design
Water Resources

Join the Celebration



April is World Landscape Architecture Month (WLAM), an international celebration of landscape architecture. WLAM introduces the profession to the public by highlighting landscape architect-designed spaces around the world.

From the iconic Central Park in New York, to your favorite local park, WLAM celebrates the work of ASLA's members and landscape architects around the globe.

Check out #WLAM2021 on instagram for everything great about World Landscape Architecture Month.

ABOUT / ADVOCACY

This year we returned to our annual Advocacy Day format with in-person meetings held in Frankfort on February 15th. This year we focused on meeting new members of the House and Senate Licensure, Occupations, and Administrative Regulations (L & O) committees. As a part of these meetings, eight members were able to attend a House L & O committee meeting and then meet with four house members and two senators. One of our meetings was with Chairman Matt Koch (District 72), in which we discussed our professions concerns with recent deregulation and delicensure legislature introduced in other states. During these meetings we discussed the practice of Landscape Architecture and the unique services we provide to the people of Kentucky. We discovered that many of the new members have professional experience with Landscape Architecture and universally supported our profession and its role in designing spaces that protect the public's health, safety and welfare.

Additionally a smaller group meet with key leaders at KYTC to discuss the role that Landscape Architects can play on supporting transportation cabinet work and better defining the scope of practice that will be allowed by KYTC. This meeting developed out of ASLA's recent work at the national level to have Landscape Architects included in the allowed design professionals to oversee work funded through the Infrastructure Act and the Inflation Reduction Act. We left this meeting excited about future collaboration with KYTC and with a list of requests from KYTC to support their review of internal practices.

Our national advocacy efforts have adjusted to a digital meeting format. This format allows for better meetings with legislative staff where chapters can be supported by National ASLA staff members and professionally advocates. During these meetings we discussed the value of Soil and Water conservation and TIGER grants to Kentucky. We also

discussed specific priority legislation related the Excess Urban Heath Mitigation (H.R. 7534 & S.5313) and Outdoors for All (H.R. 5431 & S.2887).

While these specific advocacy efforts are important touch points with legislatures, the act of building relationships extends far beyond a single day. As professionals, we need to be committed to thinking about how we share our work with our elected officials. Please consider how your work impacts the lives of the communities you are working in and share this work with elected officials. As we celebrate our work with others, their knowledge of our profession and the value we add to projects will expand.

We would love to hear from you if you have worked with departments of transportations in other states.

Please consider hosing a tour of your projects or inviting elected officials to your next public meeting. If you have questions or would like supporting information, please contact Sarah Kopke-Jones or Kevin McCalla.



ASLA KY / 2022 ANNUAL KY CONFERENCE

It had been two years since our 2020 Vision, Conference on Landscape Architecture, was canceled. So we thought it would be a good time to reconnect.

Connectivity is an essential part of Landscape Architecture. Through physical, cultural, historical, environmental or biological means connectivity creates positive outcomes. Whether it is through bringing together two dissimilar things for a mutual benefit or by combining similar items to increase an already positive impact. Reconnect explored these ideas of connectivity.

Presentations were given with topics ranging from the expansive multi-state trail systems, Tennessee RiverLine and The Ohio River Recreation Trail, to community focused

engagement and assistance from the Arrowhead. We had experts from Lexington's local government explain greenspace in the Bluegrass and how they focus on connecting people and place in our unique landscape.

We also had special presentations focused on Frederick Law Olmsted as we celebrated the 200th anniversary of his birth. We ended the night with a Panel Session that explored the role of landscape architects in the future of Lexington.

Reconnect 
Conference on Landscape Architecture
Lexington, KY



ASLA KY / 2022 ANNUAL KY CONFERENCE FIELD SESSIONS

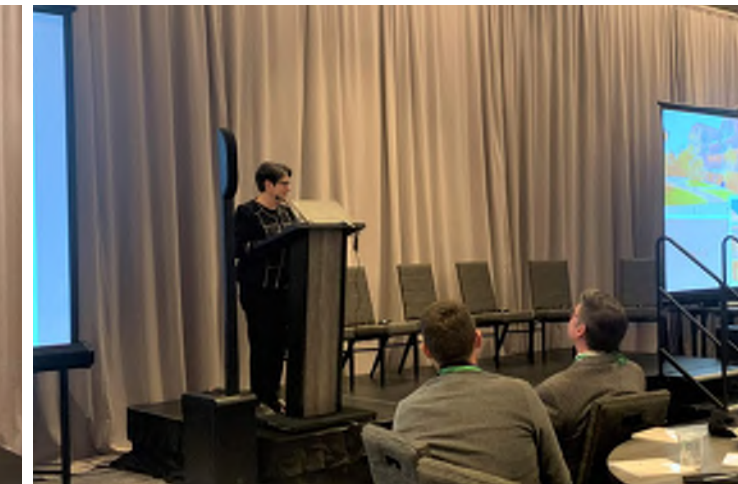
Our field sessions focused on the recently completed Town Branch Commons that stretches from Rupp Arena to Winchester Road. Our first session was a Sketch Crawl that explored the trail and its visual relationship with downtown Lexington. Stopping at several points, the Sketch Crawl started by sketching the details of the trail's patterns before having attendees expand their field of vision to encompass a broad view of the trail amongst the infrastructure and character of the city.

The second session was a complete tour of Town Branch Commons given by members from the design team and local government officials. Starting behind Rupp Arena the tour highlighted the challenges that were overcome during the design and construction along with insight into the expansive collaboration process. Walking the 3.2 mile trail, attendees were given detailed and expert information from a variety of perspectives which made this tour a huge success. Ultimately, both field sessions truly embodied the spirit of the conference by emphasizing historical, multi-modal, environmental, educational and community connectivity.



ASLA KY / 2022 ANNUAL KY CONFERENCE AWARD CEREMONY

Awards night was a special occasion as we were able to host a large crowd for the first time since 2019. Awards are important because it is a chance to show those not familiar with our profession what the best of our work can be. The room was full of individuals from a wide range of professions and backgrounds, celebrating what landscape architecture is capable of. Awarded projects ranged from built work to conceptual vision to detailed planning and analysis. The abilities of a landscape architect are broad. We were honored to present Holly Wiedemann with the Grady Clay Award for Community Involvement, after a long two year wait. It is also an important part of the ceremony to highlight student work. Several students from UK were awarded based on design and academic achievement.



ASLA KY / ADVOCACY TOUR CHEROKEE PARK

As part of Torey's visit, ASLA KY organized an advocacy tour to highlight an expansion to Louisville's Olmsted Parks System. Cherokee Park (one of three flagship parks within the Louisville system), will grow by 25-acres with the addition of Beargrass Preserve.

During the park tour, members of ASLA KY Executive Committee and ASLA CEO Torey Carter-Conneen met with Louisville Mayor Fishcher, Olmsted Parks Conservancy CEO Layla George, and Norman Noltemeyer (who donated the money to procure Beargrass Preserve). The tour created an opportunity engage in conversation with city leadership around the importance of investing in parks and the legacy



ASLA KY / ASLA CEO VISIT LEXINGTON

ASLA Kentucky hosted ASLA CEO Torey Carter-Conneen in late September to showcase some of the work being done in Kentucky by practitioners, students, faculty, and ASLA KY.

On Torey's first full day in Kentucky we started with a Breakfast Social where the Lexington Planning Department presented, The Future of Lexington: A Review of the Comprehensive Planning Process. Speakers Jim Duncan and Sam Castro explained the comprehensive plan and the role that landscape architects play in shaping the future locally and regionally.

This was followed by a site tour of Town Branch Commons led by members of the design team: Erin Masterson (Gresham Smith), Patrick Henry (Gresham Smith), Billie Motsch (Element Design) Ramona Fry (Element Design) and Scott Thompson (LFUCG). The tour took us through the decisions and milestones of this expansive project while highlighting the interesting details.

Lunch was spent with the University of Kentucky Landscape Architecture program where each studio had time to speak with Torey about ASLA, landscape architecture and their work. Then everyone put on their hard hats and toured the construction site of the future home of the landscape architecture department at the Gray Design Building.



ASLAKY / ASLA CEO VISIT LOUISVILLE

Day Two of Torey's Visit started with a fantastic tour of a variety of parks throughout Louisville. Jeana Dunlap led the first portion as we visited Shawnee Park. Here we learned about its history and evolution from a white only park to serving a predominantly black neighborhood now. This Olmsted designed park is a landing pad for programming geared towards connecting local youth with outdoor spaces.

From there the tour ventured to the outer reaches of the city to the Parklands of Floyds Fork. Here the Parklands Management Team detailed the park's vision and its impact on the future growth of the city.

We ended our Louisville tour with a stop at Waterfront Park. This world class river park reclaimed industrial land to public park. The park hosts over 2 million visitors a year and is still growing. Our tour guides for this stop were Andy Knight of MKSK and Deborah Bilitski, President of Waterfront Park. They presented plans and ideas for Phase IV of the park which broke ground in October 2022.



ASLA / ANNUAL NATIONAL CONFERENCE SAN FRANCISCO

“ASLA has developed its first Climate Action Plan in the spirit of great optimism. We envision communities becoming healthier and economically stronger because they have committed to drawing down carbon, restoring ecosystems and increasing biodiversity, and reducing reliance on vehicles – all while ensuring everyone in their community has equitable access to these benefits.”

– ASLA Immediate Past President Jeannie Martin, FASLA, and ASLA CEO Torey Carter-Conneen

Over 6,000 people attended the annual ASLA Conference in San Francisco, making it the most attended conference yet. Some of the highlights include ASLA CEO Torey Carter-Conneen launching the Climate Action Plan, the National Awards Ceremony, General Session, Expo and the LA Bash Block party featuring over 40 schools in attendance.

The ASLA Conference on Landscape Architecture education program featured 114 education sessions, 24 field sessions, six deep dive sessions, three workshops, and one general session with nearly 275 speakers contributing to the program.

Next year's conference is headed to Minneapolis!



UKLA/ MAYFIELD STUDIO STUDENT REFLECTIONS

LEENA AL GHAILANI

Another inspiring moment for me was listening to each of the community members and the mayor talk about how much they appreciate their town and each other. They have worked together, whether directly or indirectly, to create the Mayfield that existed before the disaster hit, but now they are working just as hard again to create a better Mayfield that will exist in the future. Something that was unfortunate to hear but really stuck with me, was that those who spent most of their lives protecting Mayfield witnessed the destruction happen within only a couple of minutes. This is a statement that I will always remember while creating solutions and designs for the town, and I am motivated to help create a better future for those who went through this extremely unfortunate event. I believe that with more patience, good things will happen to Mayfield, and as for me and my role, I am excited to offer my knowledge and put effort into creating a vision for the community members to see and be happy with.

DONNIE THORNTON

That meeting, along with the site visit, made the entire trip worthwhile. All groups were able to gather up so much information from the sites as well as the members of the community telling us what they like or don't like and what they want or don't want in their town. The time we spent in Mayfield was priceless. The conversations Katie and I had with people during the stakeholders meeting are extremely valuable. We were able to gather a plethora of information that will be useful when designing our site, the urban park. I will not go into this project thinking I know what is best for the people of Mayfield. I will listen to their wants and needs and take everything into consideration before planning my design. The trip to Mayfield was helpful and what we go from it is not something you can get from a picture or a Zoom call. plethora of information that will be useful when designing our site, the urban park. I will not go into this project thinking I know what is best for the people of Mayfield. I will listen to their wants and needs and take everything into consideration before planning my design. The trip to Mayfield was helpful and what we go from it is not something you can get from a picture or a Zoom call.

KATIE DAVIS

Seeing Joplin was a very uplifting experience. It was very inspirational to see how far the community has come within the past decade. It gave me a lot of hope for the future of Mayfield. Hearing the stories from the community members was very inspirational, I loved seeing how strong and connected the community was. It was interesting to hear about what makes them stay in Mayfield, and why they care about it so much. The most striking thing the young woman said was how Mayfield will always be a small town. In my mind, I look at landscape architecture as a tool to grow a city, however, I now realize that that is not every city's goal. And people are living in these small towns for that very reason, because it is small. This realization made me understand the importance of understanding and respecting the budget and goals of the town.





PlayPros

of Indiana and Kentucky

- On-site Consultation
- Playground Design
- Shelters and Canopies
- Shade
- Safety Surfacing
- Aquatic Play
- Site Furnishings
- Sports Equipment
- Dog Parks
- Custom Products
- Certified Installation
- Certified Playground Safety Inspections
- Part Replacement
- Start to Finish

CONTACT US

866-959-7866

PLAYPROS.COM



2022 ASLA KY / AWARDS

HONOR
AWARD

Every year the best projects across the state are recognized and set apart as superior professional design. These projects are awarded Honor.

MERIT
AWARD

Projects given the award, Merit, display good design and characterize environmental responsibility. The jury may award any number of entries in any category this distinction.

STUDENT
AWARD

The Student Award recognizes good design and students currently working towards a landscape architecture degree. The jury may award any number of Honor and Merit awards in this category.

GRADY CLAY
AWARD

The Grady Clay Award is a state honor given to an individual who sustains and strengthen Kentucky communities across the state.

2022 ASLA KY / JURY

Thank you to the Pennsylvania Delaware State Chapter of the American Society of Landscape Architects for serving as jury committee on this year's Honor and Merit awards!

- Bill Moldovan, PLA, ASLA
- Michael LoFurno, PLA, ASLA
- Conway Bristow, PLA, ASLA
- Bryan Smith, PLA, ASLA
- Elena Alves, PLA, ASLA
- Keena Miles, ASLA
- Mike Lachman, PLA, ASLA
- David Goldberg, ASLA



TAYLOR SIEFKER WILLIAMS DESIGN GROUP / THE COMMONS

MERIT
AWARD

Design / Non-Constructed Work
Washington, Indiana

The Commons is an urban park located in Washington, Indiana, which is at the western edge of the southern Indiana region. The project site is currently a paved downtown block that is bordered by several commercial buildings that will be preserved. Programming for the park will include farmers markets, festivals, food truck rallies, and bring a daily life and vibrancy to Main Street. The design embraces the spirit of place – connecting both current needs and uses, which includes creating signature and flexible space for local festivals and events. The Commons provides a rare opportunity to enhance the public realm in the community, and in the process, provide a home for signature community events. The Commons is setting the stage for a healthy and productive downtown community for decades to come.

Client/Owner:
Daviess County Economic Development Corporation

Collaborators:
Taylor Siefker Williams Design Group – Prime Consultant and Landscape Architect
VS Engineering – Civil and Structural Engineer
The Engineering Collaborative – MEP Engineering

“This project will be a great benefit to locals and visitors.”

– ASLA PA/DE State
Chapter Awards Jury



Images courtesy of Taylor Siefker Williams Design Group



SCAPE & GRESHAM SMITH/ TOWN BRANCH COMMONS

**HONOR
AWARD** Design / Constructed Work
Lexington, KY

“An outstanding project from every aspect. Love the use of materials and plantings that connect the modern practices of streetscape design/function to iconic Kentucky element to help define the sense of place and pay homage to the area.”

– ASLA PA/DE State
Chapter Awards Jury

Town Branch Commons is a transformative 2.2-mile park and trail system that runs through downtown Lexington, Kentucky. Tracing the historic Town Branch Creek, Lexington’s original water source buried below the city’s streets, this project serves as the hub of a city-wide trail system that connects the city center to the countryside. The linear park system includes continuous bike and walking paths, a lush green band through downtown, new and existing parks, improved water quality and addresses sanitary consent decree upgrades. Previously, the downtown streets adjacent to the Town Branch corridor were busy, high-speed roadways, dangerous for pedestrians and cyclists but also central public transportation routes. The passage was transformed into a safe multi-modal trail system that separates people from vehicles. It connects diverse neighborhoods along its path and promotes active transportation, economic development and health. The high-performance infrastructure project is an investment in Lexington’s civic assets and public infrastructure that connects people and creates a more resilient community.

Client:
Lexington-Fayette Urban County Government

Collaborators:
Design Team Leads
SCAPE (Design Vision & Master Plan)
Gresham Smith (Final Design & Implementation)

Collaborators
Strand Engineering, Element Design, EHI Consultants, Aguilar Stone Masonry, Pace Contracting, AECOM, Lord Aeck Sargent, Third Rock Consultants, Lochner, KYTC, FHWA, University of Kentucky, VisitLex, Town Branch Trail, Inc., Acheulean Consulting, Art Inc. Kentucky, Yvonne Giles, Kenneth Brooks



Images courtesy of Gresham Smith + Ty Cole





ROSSTARRANT ARCHITECTS/ FRONTIER NURSING UNIVERSITY

MERIT
AWARD Design / Constructed Work
Versailles, KY

This project transformed a 217-acre, aging and largely abandoned service agency campus into a new home for Frontier Nursing University (FNU). Led by landscape architects, this complex project focused on the adaptive reuse of 19 acres at the core of campus.

The campus plan was designed to support the FNU mission and image while celebrating the site's natural attributes including an active stream, heritage trees and natural meadows. Campus circulation was completely reimagined to incorporate outdoor spaces for social gathering, a creekside firepit, walking trails, and spaces for quiet reflection. New building entry plazas were created to welcome visitors to 11 fully renovated historic buildings and two new structures—one of which features an expansive outdoor dining space.

To achieve this project, designers navigated challenges including sink holes and bat colonies without deviating from an extremely aggressive and inflexible project schedule. The result is a brand-new university campus in Central Kentucky that clearly reflects FNU's prestigious reputation as a center of excellence for midwifery and nurse practitioner education.

“This project exemplifies understanding the natural process of the site and the design responds to working with the natural conditions with a professional understanding of site conditions and maintenance requirements.”

— ASLA PA/DE State
Chapter Awards Jury





MKSK/ IMAGINATION ALLEY

MERIT
AWARD Design / Constructed Work
Cincinnati Ohio

Imagination Alley is a newly constructed 6,000 sf pocket park in the heart of the Over-the-Rhine neighborhood in Cincinnati, Ohio. The site, characterized by overgrown vegetation and once a hotspot for criminal activity over recent years, has now been transformed to become a neighborhood green space for community events and public gatherings. With goals derived from a robust and creative community outreach process, the design team was given clear key objectives and metrics to help create a successful transformation of the derelict park, including providing better lighting, more art, additional seating, lush green spaces, and developing flexible event spaces. The finished pocket park has become the jewel of the neighborhood with residents and visitors from adjacent businesses utilizing the park daily during lunches and afternoons as well as community members holding impromptu barbecues and movie nights in the alley. Neighbors and community members alike are celebrating this new addition with its public art installations, pop up markets, and enjoying the natural beauty of cultivated landscapes and green walls within this newly established urban oasis.

Collaborators:
MKSK – Project Lead
Burgess & Niple – Stormwater/Civil Engineering
KLH – Electrical & Lighting
3CDC – Client – Lann Field

“The improvements to this small public space are outstanding. Maintaining key existing vegetation and creating a fun environment where a multitude of activities (occur) is very well done.”

– ASLA PA/DE State
Chapter Awards Jury





TAYLOR SIEFKER WILLIAMS DESIGN GROUP / RICE ISLAND PARK

MERIT
AWARD Design / Constructed Work
Corydon, Indiana

Rice Island is a 6-acre island bounded by Little Indian Creek in Corydon, Indiana. The site was developed as recreational fields as part of the WPA in the 1930's. Given the limited access to the island and seasonal flooding, the recreational fields were abandoned for a better suited site. The site was reimagined by the Town in 2019 to celebrates history, landscape, and community by creating park with large open spaces for community gathering, a playground for children, native plants to attract wildlife, and a strong connection to residential and the downtown district. To achieve the community vision, the design team worked with the Town to identify opportunities to incorporate salvaged materials and structures, while also designing for a lighter touch on the landscape. The resultant design includes a restored WPA era Field House, park shelter, 1-acre lawn, restored 1886 bridge to connect the island to the town, nature themed playground, and includes future plans to create a 2-acre pollinator meadow with connected walking paths.

Client/Owner:
Town of Corydon, IN

Collaborators:
Taylor Siefker Williams Design Group – Prime Consultant and Landscape Architect
VS Engineering – Bridge Rehab Engineer
Midwestern Engineers – Civil and Structures

“Great re-use of existing and historic structures to re-develop a lost park. The reconnection of pedestrian and vehicular access, makes the park accessible for all.”

– ASLA PA/DE State
Chapter Awards Jury



Images courtesy of Taylor Siefker Williams Design Group





Design. Build. Play.

www.midstatesrecreation.com

1279 Hazelton-Etna Rd SW
Pataskala, Ohio 43062



Our Products & Services

- Playground Equipment
- Safety Surfacing
- Site Amenities
- Outdoor Fitness Equipment
- Outdoor Musical Instruments
- Shade, Shelters, & Pavilions
- Installation & Inspections
- In-House CAD Design

GRESHAM SMITH/ BROADWAY ALL THE WAY

HONOR
AWARD Planning and Design
Louisville, KY

For over 200 years, Broadway has served as Louisville, Kentucky's transportation backbone. However, the corridor has shifted from a community catalyst to an area in need of improvements and modernization. Broadway runs 5.5-miles, west to east and along the way it traverses residential, commercial and industrial areas, connecting people to goods, jobs and services. However, these connections also play a central role in creating systemic disadvantages for Louisville's most at-risk communities. The existing transit service is inefficient and unreliable; the environment created by auto-centric infrastructure is unhealthy; and the roadways are unsafe for vehicles, pedestrians and cyclists, especially for those users who rely on public transit the most.

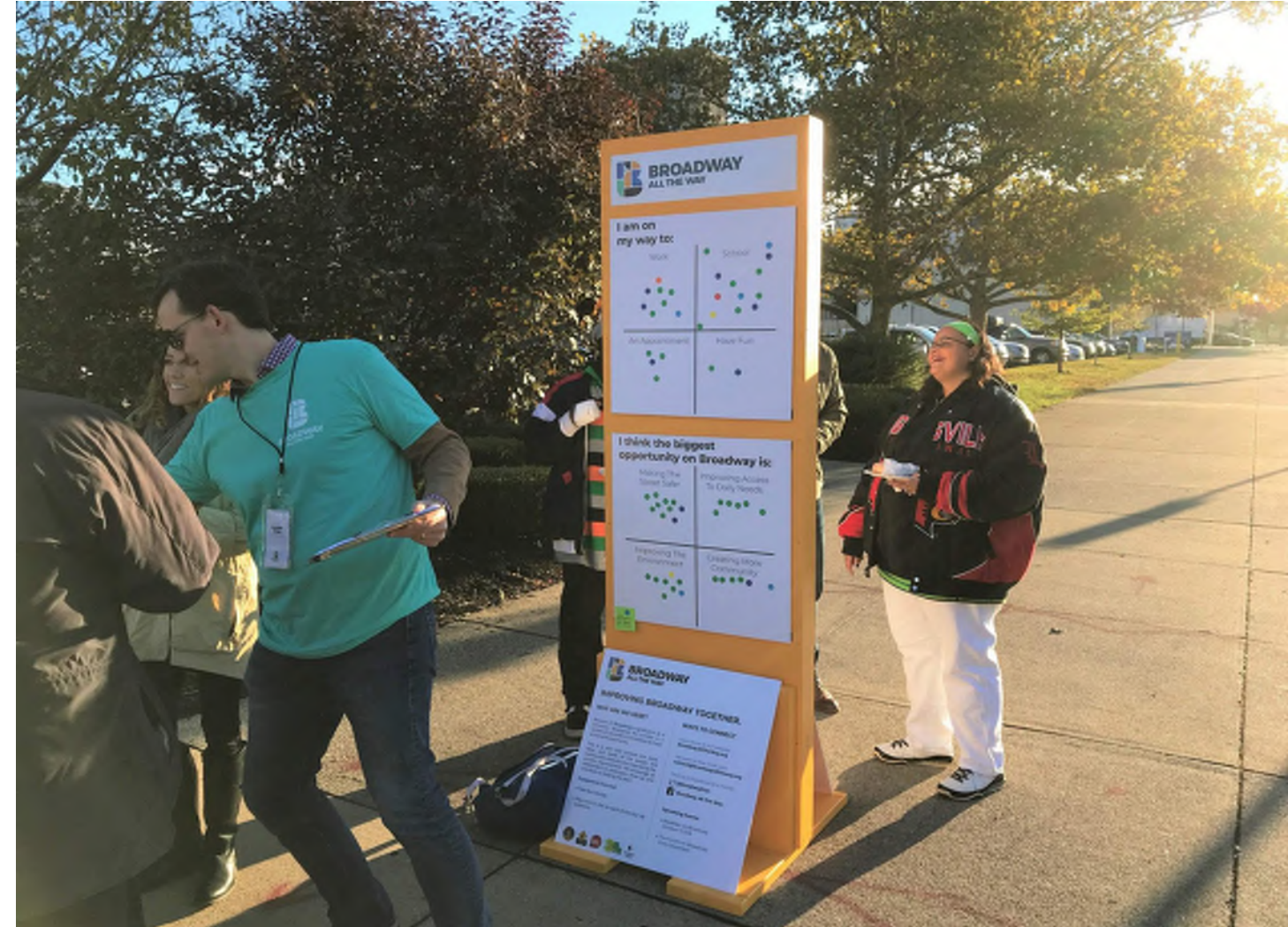
Gresham Smith was tasked with leading a master plan that would not only help people move safely and efficiently through the city, but also elevate the quality of life for residents. By breaking down the Broadway All the Way master plan project into three phases, the team identified opportunities to create a forward-looking multi-modal corridor that simultaneously addresses safety, equity, climate change and economic outcomes.

Client Team:
Louisville Metro, Office of Advanced Planning and Sustainability
TARC
KYTC
Louisville Downtown Partnership

Collaborators:
Gresham Smith
Jarrett Walker + Associates
Street Plans
EHI Consultants
Mightily
City Visions
Hyphae
Equitable Cities

*“Great example of how
Landscape Architects can
successfully lead multi-
discipline multi-modal
projects which foster
community engagement
and sustainability.”*

– ASLA PA/DE State
Awards Jury



Images courtesy of Gresham Smith





“The creative use of stormwater management practices create a functional and aesthetically appealing landscape enhances the 900 Block. The design turns a functional stormwater system into site features that benefit both the site and end user.”

– ASLA PA/DE State
Awards Jury

Prone to flooding as a result of aging stormwater infrastructure, the North Side of Lexington, Kentucky has experienced significant water management issues for decades. Originating from a feasibility study of the client’s multifamily properties in the area, Gresham Smith identified 900 Block as a strong candidate for the city’s Stormwater Incentive Program, a grant that encourages individual owners and neighborhoods to invest in their property while improving urban ecologies and stormwater systems.

While resilient infrastructure was a top priority, Gresham Smith developed a design approach that imagined green infrastructure as an integral piece to the residential landscape design, a true rain “garden”. This approach was successful with the custom bio-planters along the water walk that showcase stormwater in an interactive experience and an immersive garden space. Additionally, the team developed a landscape plan and palette that used massings and order to create a composed, controlled and easy-to-maintain landscape. Given that the tenants are renters, the team planned for minimal maintenance and no irrigation, selecting native species that were hardy to extreme conditions.

Leveraging public funding by way of a local grant program meant the project team had to develop an economical design. The construction costs associated with the below-grade elements of the bioswales, rain gardens and well as the permeable paver system significantly contributed to the overall cost, leaving little room for finishes, amenities and landscape. Using resourceful materials like poured-in-place concrete and smaller landscape plugs, it allowed the final project to be cost-efficient and still achieve the goals set by the design team.

Client:
Price Bell, Frontier Highway

Collaborators:
Gresham Smith - Design Team
Landscape Workshop - Contractor
Lexington-Fayette Urban County Government Division of Water Quality - Grant Organization



Images courtesy of Gresham Smith



UKLA / CONNECTING CARROLLTON

MERIT
AWARD Student Award
Carrollton, KY

In “Connecting Carrollton,” we aimed to connect people to each other and to the rivers that border their towns. Located at the confluence of the Kentucky and Ohio Rivers, Carrollton, Kentucky is a small town with a rich history. It has a sizable state park on its outskirts, but it is heavily car-dependent. As a result, investment has been largely in the form of chain retailers near the interstate. Our project aims to revitalize Carrollton’s downtown, which has seen significant disinvestment over the years due to flooding concerns. To help Carrollton reach its full potential, we plan to improve circulation and take advantage of both the aesthetic and ecological qualities of the rivers. Our plan aims to transform Point Park into an ecologically rich and flood-resistant area. It also reimagines Main Street as a pedestrian-friendly hub of activity with improved connection to the waterfront. Connecting Carrollton is a vision that celebrates and embraces the rivers that have shaped this small town. We hope to reveal this quaint Kentucky town’s hidden potential by reordering and reimagining the existing space.

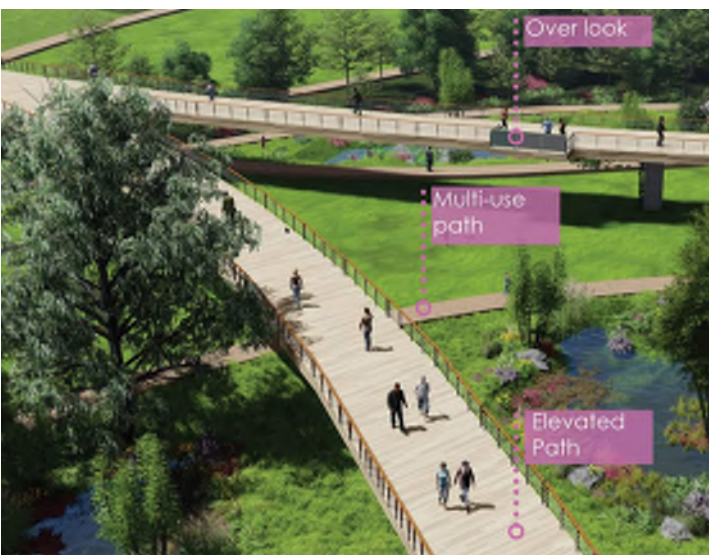
Team Members:
Yasser Frandin Perez
Felix Lowery
Leena Al Ghailani

Instructor:
Carolina Segura Bell

*“Excellent team effort!
Analysis, master plan, and
sections clearly express the
proposed improvements
described in the narrative.”*

– ASLA PA/DE State
Awards Jury





GRADY CLAY COMMUNITY VISION AWARD / CINDI SULLIVAN

GRADY CLAY AWARD

The Kentucky Chapter of the American Society of Landscape Architects is pleased to announce the 2023 Grady Clay Community Vision Award recipient. The Grady Clay Community Vision Award is named in honor of Louisvillian, Grady Clay, Jr., the internationally acclaimed writer and urbanist. The award honors those who have improved the quality of life for Kentuckians by offering design vision and creative solutions that sustain and strengthen Kentucky's vibrant communities.

The Kentucky Chapter of the American Society of Landscape Architects Executive Committee unanimously selected Cindi Sullivan to receive the 2023 award as an expression of our appreciation for her continued advocacy for environmental issues such as the preservation and expansion of the Louisville and regional tree canopy and spearheading the fight to prevent continued tree canopy decline. Her career spans more than 35 years in the fields of horticulture, agronomy research, government services, environmental consulting, media and non-profit work. Cindi is currently the Executive Director/ President of TreesLouisville, where she engages with the citizens of our Louisville community to advocate for environmental change. TreesLouisville is recognized as a community leader in achieving a more livable and healthy community for Louisville's current and future generations

through a robust urban tree canopy. Their mission is to be a catalyst for conserving and increasing the community tree canopy in Louisville to achieve and maintain 45% overall canopy coverage through civic awareness and public engagement. For more than 25 years, Cindi hosted both daily television and radio programs focused on horticulture, environmental and lifestyle issues which makes her a perfect ambassador to educate others about TreesLouisville and its mission. This mission is one that is fully supported by the Kentucky Chapter and we honor Cindi's work serving her community through volunteerism and activism. Her work has directly and positively affected the quality of life for all Louisvillians and will have a lasting affect for many years to come!



Having the honor to work with Cindi cannot easily be described in words. Her ability to encourage and inspire students and the communities she works with is unparalleled and is driven by her contagious and tireless energy. Our students who have presented their "TreesLouisville" project come away feeling highly valued with a sense of importance toward community service, a mindset we all share. Perhaps most importantly, she shares a love of community and greenness with others that makes Louisville, and the world, a better place.

-Chris Sass, UKLA Department Chair





Top: Second-year students visit a booth at our 2022 Career Fair, held in partnership with the College of Design. Together, we welcomed 48 firms and two professional organizations to the Gatton Student Center. Lower left: KY ASLA past president Matt Hisle and third-year UKLA student Anna Del Rio, this year's winner of the KY ASLA Student Scholarship. Lower right: ASLA CEO Torey Carter-Conneen visits with a mix of first- and second-year UKLA students.



BSLA '23 Congratulations!

Leena Al Ghailani	Abby Phelps
Katie Davis	Zoe Sermersheim
Yasser Frandin Perez	Donnie Thornton
Brendyn Freeman	
Caroline Kushon	
Felix Lowery	
Chris Metts	

Top left and bottom right: the class of 2023 poses for pictures together while on site visits. Top right: Yasser Frandin Perez smiles at his classmates during a site visit.



Landscape Architecture

UKLAASLA / STUDENT ACADEMIC AWARDS

STUDENT AWARD

The ASLA Student Honor and Merit Award program, administered through the ASLA chapters, is designed to be a collaborative effort between and ASLA chapters and landscape architecture programs. The awards recognize academic achievement, design competence, and interpersonal skills.

The presentations of all four candidates impressed the jury. Their individual paths were highlighted as they described their journey through their academic careers. Through organized graphics and written summations, each candidate engaged the jury displaying their unique personalities and communication styles to demonstrate how they were led to the field of landscape architecture. During the course of their deliberations, the Jury made observations about each candidate.

General Award requirements;

- 1) Nominees must be truly outstanding as measured by your program's long-term standards of excellence.
- 2) Nominees must have demonstrated the highest level of academic scholarship and of accomplishments in skills related to the art and technology of landscape architecture.
- 3)Nominees must have demonstrated personal qualities and skills of:
 - A) responsiveness and willingness to work with others,
 - B) self-motivation and responsibility, and
 - C) design abilities: exploration, discovery, synthesis and representation of landscape architecture design.



HONOR
AWARD

Abby Phelps

"Abby exemplifies the practice of Landscape Architecture. She shared a sense of passion for designing spaces that not only impact communities but are shaped by communities. Through her experiences at the University of Kentucky and abroad, Abby successfully demonstrated excellence in blending natural spaces with the built environment. Abby impressed the jury with her ability to clearly communicate a vision of the future and how her experiences would shape her professional life. Her discovery and representation of Landscape Architecture as a uniter of people and communities was especially meaningful to the jury."

-Award Jury



HONOR
AWARD

Yasser Frandin

"Yasser's talent as a designer shown through his presentation. He successfully demonstrated a gifted vision of space and an ability to craft meaningful spaces within his design. The jury felt that his work illustrates a complex understanding of the materials that are the foundation of our profession and that his use of those materials enriched his designs. The jury was inspired by his personal story and how his experiences have informed his life and his journey as a designer. Yasser impressed the jury with his understanding of place and how we as a community relate to the spaces that surround us."

-Awards Jury



MERIT
AWARD

Zoe Sermershein

"Throughout Zoe's presentation she exhibited a passion for service, a dedication to her collaborators, and a desire to see her community succeed. These attributes impressed upon the jury that Zoe is a natural leader, who has passionately served her peers and the student chapter of ASLA. She impressed the jury with her understanding of the natural world and its systems. Her energy felt contagious and clearly allows others to see her as an easily approachable leader. The jury felt that her desire to use her practice of Landscape Architecture to connect communities and further access to natural spaces exemplified the goals of ASLA."

-Awards Jury



MERIT
AWARD

Brendyn Freeman

"Brendyn's journey through his Landscape Architecture studies demonstrated a level of boldness and courage. Brendyn's transition from engineering to landscape architecture exemplified his ability to confront change and challenge himself. The jury was impressed by his willingness to challenge himself beyond the tasks set by his professors. The jury felt that Brendyn's ability to work while in school, be the first in his immediate family to graduate college, and the sharing of his entrepreneurial spirit enriched his practice as a landscape architect. Brendyn went beyond his peers in starting his presentation by recognizing his peers, professors, and others as contributing to his success as a landscape architecture student."

-Awards Jury

PRESIDENTS / KENTUCKY CHAPTER ASLA



Trustee
Amin Omidy
Taylor Siefker Williams
Louisville



Past President
Matt Hisle
CARMAN
Lexington



President
Kevin McCalla
RossTarrant Architects
Lexington

2022-2023 / EXECUTIVE COMMITTEE



VP Membership Services
Angela Sanchez
Brandstetter Carroll
Lexington



VP Professional Development
Josh Despain
Contour Collaborative
Lexington



Treasurer
Jordan Sebastian
Lord Aeck Sargent
Lexington



Secretary
Emily Hill
Mindel Scott
Louisville



Emerging Professionals Chair
Maureen Dreckman
University of Kentucky Facilities Information
Services (FIS) Geospatial Area
Lexington



Sponsorship Chair
Joseph Browning
Contour Collaborative
Lexington



Advocacy Chair
Sarah Kopke-Jones
Jones Landscape Architecture
Louisville

At-Large Members

- Jordan Phemister - University of Kentucky
- Morgan Dunay - Gresham Smith
- Brain Roach - LFUCG Parks and Recreation
- Abdiel Martinez - CARMAN
- Emily Sands - RossTarrant Architects
- Spencer Heuke - Action Landscapes



AMERICAN
SOCIETY OF
LANDSCAPE
ARCHITECTS

